



Hot Cross Buns

trad
Arr. k bell

Violin

Cello

Violin 2

Cello 2

Hot Cross Buns

trad
Arr. k bell

Violin

The musical notation for the Violin part is written on a single staff in 4/4 time. The key signature has one sharp (F#). The melody begins with a quarter rest, followed by a quarter note F#2, a quarter note G2, and a half note A2. The second measure contains a quarter note B2, a quarter note C3, and a half note D3. The third measure consists of a continuous eighth-note run: D3, E3, F#3, G3, A3, B3, C4, and D4. The fourth measure continues the eighth-note run: E4, F#4, G4, A4, B4, C5, D5, and E5. The fifth measure contains a quarter note F#4, a quarter note G4, and a half note A4. The piece concludes with a final half note D4.

Hot Cross Buns

trad
Arr. k bell

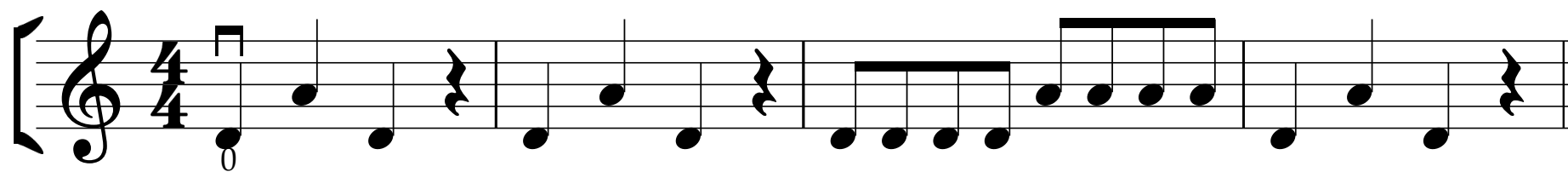
Cello

The musical notation is for a Cello part in 4/4 time, key of D major (one sharp). The piece consists of four measures. The first measure starts with a treble clef and a key signature of one sharp (F#). It contains a quarter note D4, a quarter note E4, and a half note F#4. Above the first note is a box with the number 3, indicating a triplet. The second measure contains a quarter note G4, a quarter note A4, and a half note B4. The third measure contains a quarter note C5, a quarter note B4, a quarter note A4, and a quarter note G4. The fourth measure contains a quarter note F#4, a quarter note E4, and a half note D4. The piece ends with a double bar line.

Hot Cross Buns

trad
Arr. k bell

Violin 2



Hot Cross Buns

trad
Arr. k bell

Cello 2

The musical notation for the Cello 2 part is written on a single staff in bass clef with a 4/4 time signature. The melody begins with a half rest, followed by a half note G2, a quarter note F2, and a quarter note E2. The second measure contains a half note D2, a quarter note C2, and a quarter note B1. The third measure features a half note A1, a quarter note G1, and a quarter note F1. The fourth measure consists of a half note E1, a quarter note D1, and a quarter note C1. The piece concludes with a final double bar line.